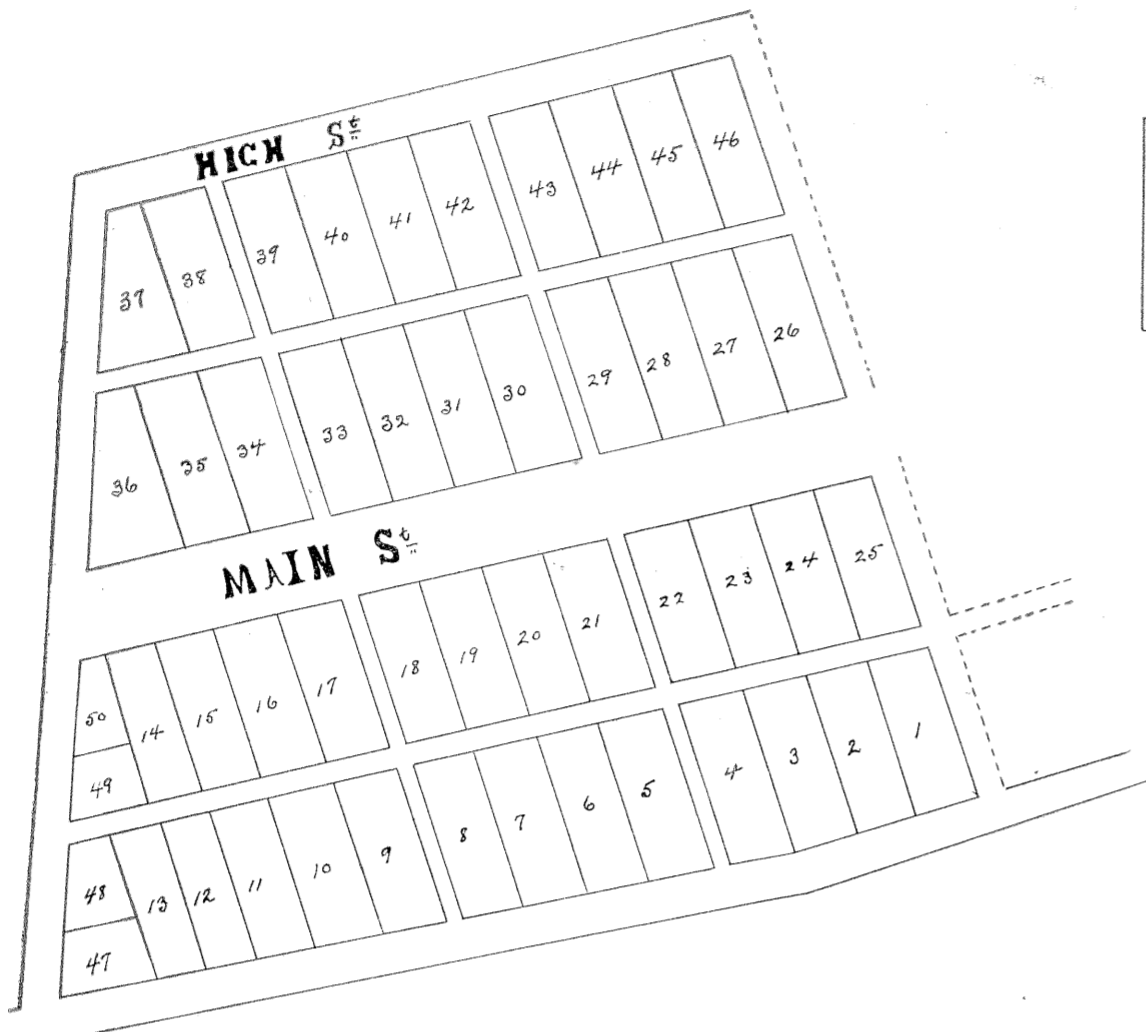
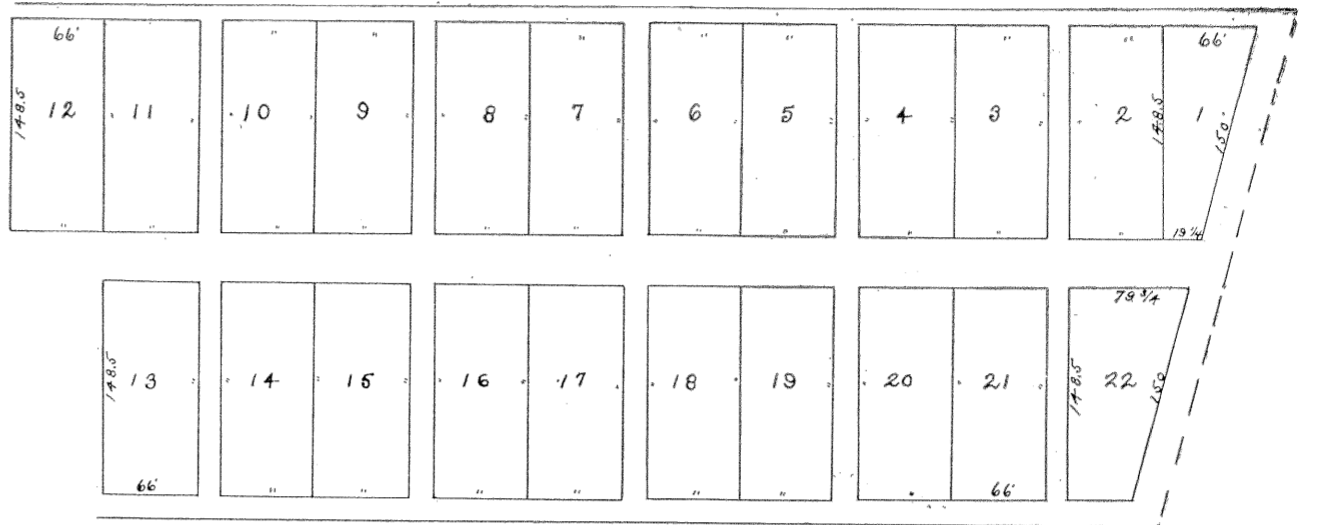


**FAIRVIEW ADDITION**  
to Pt. Pleasant  
Barnes County Ohio

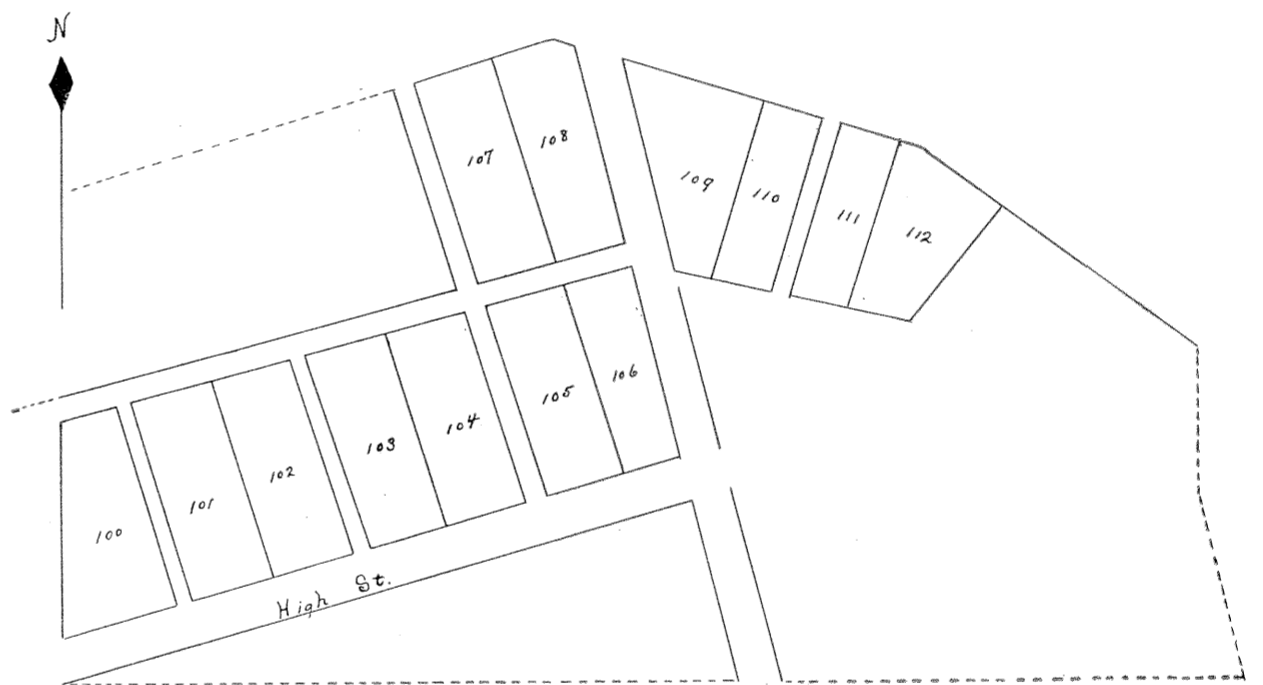
SCALE 150ft = 1 INCH.



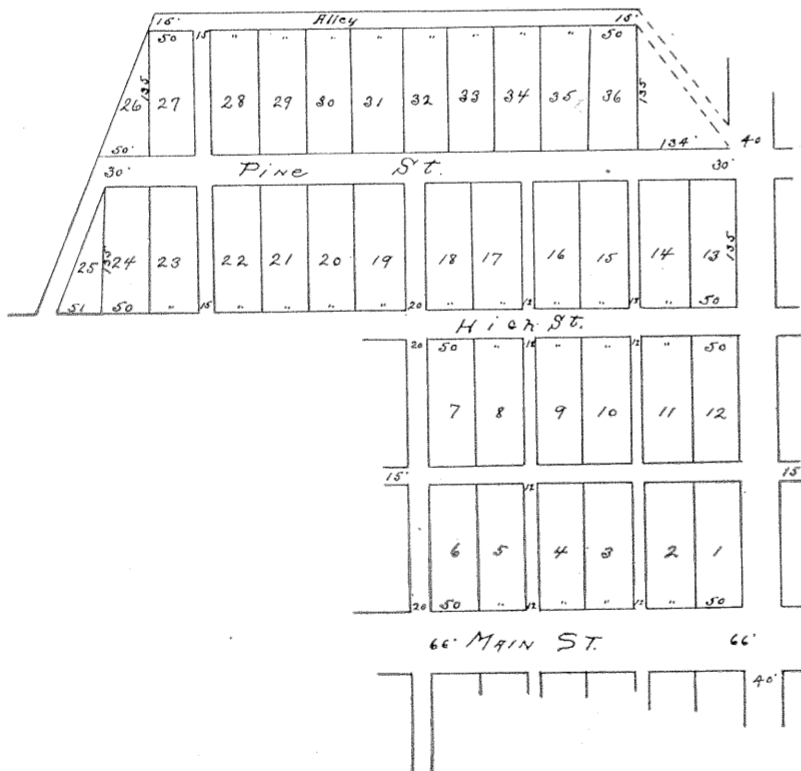
Plat of Geo. Lafollette's Addition  
to Pleasant City Ohio.



Jacob Spard's Addition to Pleasant City  
Scale 150 ft = 1 inch.



JF SECREST'S 2ND ADD.  
TO  
PLEASANT CITY



**OPPERMAN**

SCALE 200 ft = 1 INCH.  
VALLEY, TP.

